

Location Map (Not To Scale)



SURAKSHAA Highway City

@Narketpally



L.P No.: 107/2021/H

Free Resort Membership



**Rs.9,999/-
Per Sq. Yd**



SURAKSHAA — Infra Projects

Any queries please contact:

Corporate Office : H No : 2-4-1065/6/E, 4th Floor, Beside Canara Bank, Samathapuri Colony, New Nagole, Hyderabad, Telangana - 500068.

NOTE : This brochure is only a conceptual presentation. Developers reserve the right to change or alter the plan time to time, as deemed fit.

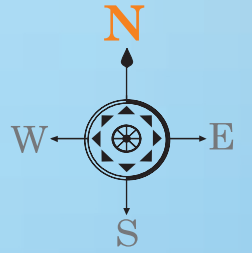
SURAKSHAA — Infra Projects

Creative Graphics: 9100 48 58 48

<< TO HYDERABAD

TO VIJAYAWADA >>

EXISTING 200 HYDERABAD TO VIJAYAWADA NATIONAL HIGHWAY NH-65



L.P No.: 107/2021/H

RATE CARD

Block - B	Rs.9,499/-
Block - A	Rs.9,999/-
Commercial	Rs.15,999/-
Any corner plot Extra	Rs.300/-
40ft road facing Extra	Rs.200/-
East facing plot Extra	Rs.100/-

PAYMENT OPTION

- *Booking Enrollment Amount Rs.99,000/-
- Plot allotment 25% Should be pay
- *with in 10 Days
- *Balance Amount to be paid with in 45 days
- *Registration charges born by customers



PROPOSED LAYOUT PLAN IN Sy.Nos. 14/P, 15/P, 176/P,177, 178, 180, 181, 182/P, 214/P & 217 OF PAMANAGUNDLA VILLAGE, KATANGUR MANDAL, NALGONDA DISTRICT.

Amenities that satisfy your active lifestyle

Life is to lived in smallest moments. Time spent in entertainment zone threads together such precious memories with loved once that are to be cherished for the lifetime. designed especially for meeting your neighbors and enjoying the pleasure of their company. It features a main clubhouse, Swimming Poll and a multipurpose open area,

Amenities

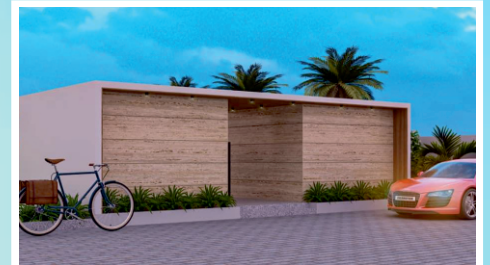
- Family Resort
- Swimming Pool & Gym
- Landscaped Meditation Park
- Children Play Park
- Indoor Games
- Yoga and Meditation Hall
- Party area with Stage
- Cottage facilities
- Mini Convention Hall

Project Highlights

- DTCP Approved Layout
- Main Entrance with Arch
- Compound wall around the site
- Children Play Area
- Underground Drainage
- Electricity with Street lights
- 40' & 33' wide CC Roads
- Overhead Tank with Water Supply
- Avenue Plantation
- Rain Water Harvesting Pits

Location Highlights

- Close to OCTL Limited
- Close to Kamineni Medical College
- Close to Sreevidyapeeth Educational Institution
- 5 Mins Drive to Cheruvugattu Temple
- 7 Mins Drive to Mahatma Gandhi University
- 20 Mins Drive From MSME Industrial Park



SURAKSHAA
— Infra Projects